

SONOFF



S26R2

User manual V1.3



TPG(UK)



TPF(DE)



TPE(FR)



TPB(US)



TPI(AU)



TPAI(CN)



TPH(IL)



TPN(BR)



TPJ(CH)



TPL(IT)

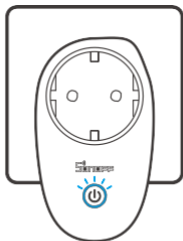
Wi-Fi Smart Plug

Operating Instruction

1. Download APP



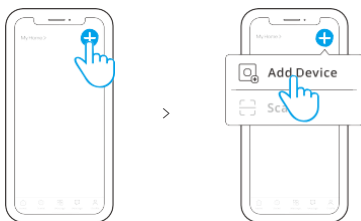
2. Power on



After powering on, the device will enter the quick pairing mode during the first use. The Wi-Fi LED indicator changes in a cycle of two short and one long flash and release.

⚠ The device will exit the quick pairing mode if not paired within 3mins. If you want to enter this mode, please long press the manual button for about 5s until the Wi-Fi LED indicator changes in a cycle of two short and one long flash and release.

3. Add the device



Tap "+" and select "Add Device", then operate following the prompt on the APP.

- ⓘ To ensure the safety of your electrical installation, it's essential either a Miniature Circuit Breaker (MCB) or a Residual Current Operated Circuit Breaker (RCBO) with an electrical rating of 16A has been installed before the Plug.

Compatible Pairing Mode

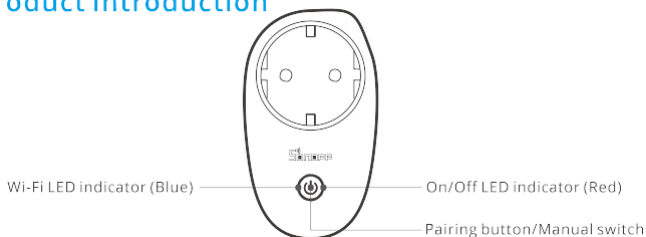
If you fail to enter Quick Pairing Mode, please try "Compatible Pairing Mode" to pair.

- 1 Long press pairing button for 5s until the Wi-Fi LED indicator changes in a cycle of two short flashes and one long flash and release. Long press pairing button for 5s again until the Wi-Fi LED indicator flashes quickly. Then, the device enters Compatible Pairing Mode.
- 2 Tap "+" and select "Add Device", then operate following the prompt on the APP.

Specifications

Model	S26R2TPF, S26R2TPG, S26R2TPI, S26R2TPN, S26R2TPH S26R2TPE, S26R2TPB, S26R2TPAI, S26R2TPJ, S26R2TPL, S26R2TPL-H	
Input	S26R2TPF: 250V~, 50/60Hz S26R2TPG: 250V~, 50/60Hz S26R2TPI: 250V~, 50Hz S26R2TPN: 250V~, 50/60Hz S26R2TPH: 250V~, 50/60Hz S26R2TPL-H: 250V~, 50/60Hz	S26R2TPE: 250V~, 50/60Hz S26R2TPB: 120V~, 60Hz S26R2TPAI: 250V~, 50/60Hz S26R2TPJ: 250V~, 50/60Hz S26R2TPL: 250V~, 50/60Hz
Max. load	S26R2TPF: 4000W/16A S26R2TPG: 3250W/13A S26R2TPI: 3750W/15A S26R2TPN: 4000W/16A S26R2TPH: 4000W/16A S26R2TPL-H: 4000W/16A	S26R2TPE: 3680W/16A S26R2TPB: 1800W/15A S26R2TPAI: 2500W/10A S26R2TPJ: 4000W/16A S26R2TPL: 2500W/10A
Operating systems	Android & iOS	
Wi-Fi	IEEE 802.11 b/g/n 2.4GHz	
Working temperature	-10°C~40°C	
Material	PC V0	
Dimension	97.5x56x35mm	

Product Introduction



Wi-Fi LED indicator status instruction

Wi-Fi LED indicator status	Status instruction
Flashes (one long and two short)	Quick Pairing Mode
Keeps on	Device is connected successfully
Flashes quickly	Compatible Pairing Mode
Flashes quickly once	Unable to discover the router
Flashes quickly twice	Connect to the router but fail to connect to Wi-Fi
Flashes quickly three times	Upgrading

Features

Remotely turn on/off the device, schedule it on/off or share it with your family to control together.



Remote Control



Single/Countdown
Timing



Voice Control



Share Control



Smart Scene



Inching Mode



Power-on State



Camera Feature



Group control



LAN Control

Switch Network

If you need to change the network, long press the pairing button for 5s until the Wi-Fi LED indicator changes in a cycle of two short and one long flash and release, then the device enters quick pairing mode and you can pair again.



Factory Reset

Deleting the device on the eWeLink app indicates you restore it to factory setting.

Common Problems

Q: Why my device stays "Offline"?

A: The newly added device needs 1 – 2mins to connect Wi-Fi and network. If it stays offline for a long time, please judge these problems by the blue Wi-Fi indicator status:

1. The blue Wi-Fi indicator quickly flashes once per 2 seconds, which means that the device failed to connect your Wi-Fi:
 - ① Maybe you have entered a wrong Wi-Fi password.
 - ② Maybe there's too much distance between the switch your router or the environment causes interference, consider getting close to the router. If failed, please add it again.
 - ③ The 5G Wi-Fi network is not supported and only supports the 2.4GHz wireless network.
 - ④ Maybe the MAC address filtering is open. Please turn it off.

If none of the above methods solved the problem, you can open the mobile data network on your phone to create a Wi-Fi hotspot, then add the device again.

2. Blue indicator quickly flashes twice per 2 seconds, which means the device has connected to Wi-Fi but failed to connect to the server.

Ensure steady enough network. If double flash occurs frequently, which means you access an unsteady network, not a product problem. If the network is normal, try to turn off the power and restart the device.

FCC compliance statement

1.This device complies with part 15 of the FCC Rules. Operation is subject to the following two conditions:

- (1) This device may not cause harmful interference, and
- (2) This device must accept any interference received, includinginterference that may cause undesired operation.

2.Changes or modifications not expressly approved by the party responsible for compliance could void the user's authority to operate the equipment.

Note: This equipment has been tested and found to comply with the limits for a Class B digital device, pursuant to part 15 of the FCC Rules. These limits are designed to provide reasonable protection against harmful interference in a residential installation. This equipment generates, uses and can radiate radio frequency energy and, if not installed and used in accordance with the instructions, may cause harmful interference to radio communications. However, there is no guarantee that interference will not occur in a particular installation. If this equipment does cause harmful interference to radio or television reception, which can be determined by turning the equipment off and on, the user is encouraged to try to correct the interference by one or more of the following measures:

- Reorient or relocate the receiving antenna.
- Increase the separation between the equipment and receiver.
- Connect the equipment into an outlet on a circuit different from that to which the receiver is connected.
- Consult the dealer or an experienced radio/TV technician for help.

FCC Radiation Exposure statement:

This equipment complies with FCC radiation exposure limits set forth for an uncontrolled environment.

This equipment should be installed and operated with minimum distance of 20 cm between the radiator and your body.

This transmitter must not be co-located or operating in conjunction with any other antenna or transmitter.

Scatola	Scatola
PAP 20	PAP 21
Carta	Carta
RACCOLTA DIFFERENZIATA	
Verifica le disposizioni del tuo Comune. Separa le componenti e conferiscile in modo corretto.	

SAR Warning

Under normal use of condition, this equipment should be kept a separation distance of at least 20 cm between the antenna and the body of the user.

Dans des conditions normales d'utilisation, cet équipement doit être maintenu à une distance d'au moins 20 cm entre l'antenne et le corps de l'utilisateur.

WEEE Disposal and Recycling Information



All products bearing this symbol are waste electrical and electronic equipment (WEEE as in directive 2012/19/EU) which should not be mixed with unsorted household waste. Instead, you should protect human health and the environment by handing over your waste equipment to a designated collection point for the recycling of waste electrical and electronic equipment, appointed by the government or local authorities. Correct disposal and recycling will help prevent potential negative consequences to the environment and human health. Please contact the installer or local authorities for more information about the location as well as terms and conditions of such collection points.

For CE Frequency

EU Operating Frequency Range
Wi-Fi: 2412-2472MHz

EU Output Power
Wi-Fi 2.4G ≤ 20dBm

EU Declaration of Conformity

Hereby, Shenzhen Sonoff Technologies Co., Ltd. declares that the radio equipment type S26R2TPF/S26R2TPE/S26R2TPG/S26R2TPJ/S26R2TPH/S26R2TPL/S26R2TPL-H is in compliance with Directive 2014/53/EU. The full text of the EU declaration of conformity is available at the following internet address:

<https://sonoff.tech/compliance/>

To ensure the safety of your electrical installation, it's essential either a Miniature Circuit Breaker (MCB) or a Residual Current Operated Circuit Breaker (RCBO) with an electrical rating of 16A has been installed before the Plug.



Shenzhen Sonoff Technologies Co., Ltd.

1001, BLDG8, Lianhua Industrial Park, shenzhen, GD, China
ZIP code: 518000 Website: sonoff.tech

MADE IN CHINA

