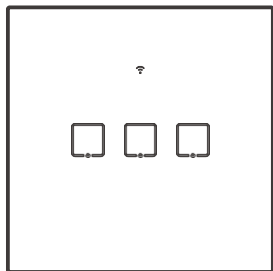


# SONOFF

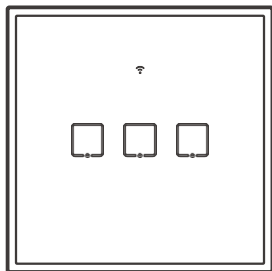


## TX EU

User manual V1.5



T0/T1

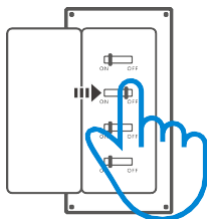


T2/T3

## Wi-Fi Smart Wall Switch

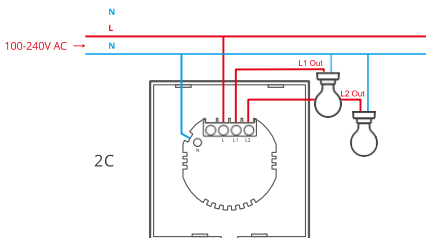
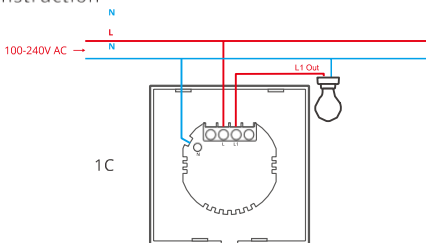
## Operating Instruction

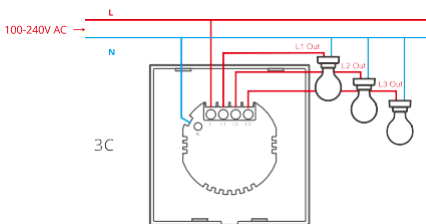
### 1. Power off



⚠ Please install and maintain the device by a professional electrician. To avoid electric shock hazard, do not operate any connection or contact the terminal connector while the device is powered on!

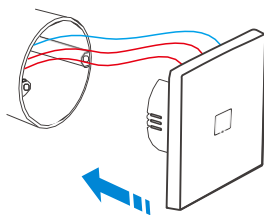
### 2. Wiring instruction





- ⚠ Make sure the neutral wire and live wire connection is correct.
- ⚠ To ensure the safety of your electrical installation, it's essential either a Miniature Circuit Breaker (MCB) or a Residual Current Operated Circuit Breaker (RCBO) with an electrical rating of 2A(1gang)/4A(2gang)/3A(3gang) has been installed before the switch.

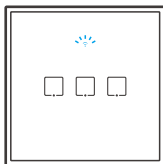
### 3. Equipment Installation



### 4. Download the eWeLink APP



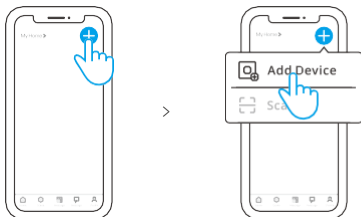
## 5. Power on



After powering on, the device will enter the quick pairing mode during the first use. The Wi-Fi LED indicator changes in a cycle of two short and one long flash and release.

- ⓘ The device will exit the quick pairing mode if not paired within 3mins. If you want to enter this mode, please long press any configuration button for about 5s until the Wi-Fi LED indicator changes in a cycle of two short and one long flash and release.

## 6. Add the device



Tap "+" and select "Add Device", then operate following the prompt on the APP.

## Compatible Pairing Mode

If you fail to enter Quick Pairing Mode , please try "Compatible Pairing Mode " to pair.

- 1 Long press Pairing button for 5s until the Wi-Fi LED indicator changes in a cycle of two short flashes and one long flash and release. Long press Pairing button for 5s again until the Wi-Fi LED indicator flashes quickly. Then, the device enters Compatible Pairing Mode.
- 2 Tap "+" and select "Add Device", then operate following the prompt on the APP.

## Pairing and Clearing with RF Remote Controller

The switch supports the remote controller with 433.92MHz frequency brand to turn on/off, and each channel can learn it independently, which is local short-range wireless control not Wi-Fi control.

### Pairing Method:

Long press the touch button you want to pair for 3s until the indicator flashes "red" and release, then short press the corresponding button on the RF remote controller and you will see the indicator flashes "red" again after successful pairing. Other buttons can be paired through this method.

### Clearing Method:

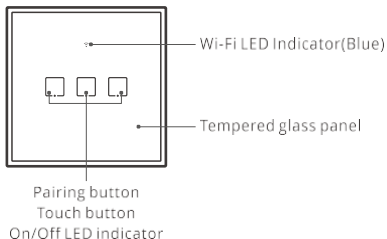
Long press the touch button you want to clear for 5s until the indicator light flashes "red" twice and release, then short press any button on the RF remote controller and you will see the indicator flashes "red" again after successful clearing. Other buttons can be cleared through this method.

## Specifications

|                   |   |
|-------------------|---|
| Model             | T0EU1C/T0EU2C/T0EU3C<br>T1EU1C/T1EU2C/T1EU3C<br>T2EU1C/T2EU2C/T2EU3C<br>T3EU1C/T3EU2C/T3EU3C  |
| Rating            | T0/T1/T2/T3( EU1C ): 100-240V~ 50/60Hz 2A Max $\mu$<br>T0/T1/T2/T3( EU2C ): 100-240V~ 50/60Hz 2A/gang 4A Total Max $\mu$<br>T0/T1/T2/T3( EU3C ): 100-240V~ 50/60Hz 1A/gang 3A Total Max $\mu$ |
| LED load          | T0/T1/T2/T3( EU1C/ EU2C ) :<br>150W@110V(per channel) , 300W@220V(per channel)<br>T0/T1/T2/T3( EU3C ) :<br>60W@110V(per channel) , 100W@220V(per channel)                                     |
| Wi-Fi             | IEEE 802.11 b/g/n 2.4GHz  |
| RF                | 433.92MHz (Receive only)  |
| Operating systems | Android & iOS   |
| Materials         | PC +tempered glass panel  |
| Dimension         | 86x86x35mm  |

ⓘ T0(EU1C/EU2C/EU3C)does not support the remote controller with 433.92MHz.

## Product Introduction



- ⓘ The device weight is less than 1 kg.  
The installation height of less than 2 m is recommended.

## Wi-Fi LED indicator status instruction

| Wi-Fi LED indicator status       | Status instruction                                 |
|----------------------------------|--|
| Flashes (one long and two short) | Quick Pairing Mode                                 |
| Keeps on                         | Device is connected successfully                   |
| Flashes quickly                  | Compatible Pairing Mode                            |
| Flashes quickly once             | Unable to discover the router                      |
| Flashes quickly twice            | Connect to the router but fail to connect to Wi-Fi |
| Flashes quickly three times      | Upgrading  |

## Features

Turn on/off the light or fan from anywhere, schedule it power on/off and share it with your family to control together.



Remote Control



Single/Countdown  
Timing



Voice Control



Share Control



Smart Scene



433MHz  
Remote Control



Camera Feature



Touch Control



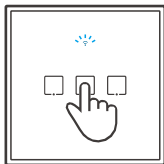
LED Backlight



LAN Control

## Factory Reset

Long press any button you desired to pair for about 5s until the Wi-Fi LED indicator changes in a cycle of two short and one long flash and release, then the reset is successful. The device enters quick pairing mode (Touch).



- ⓘ Please reset the switch to factory defaults if you want to use other Wi-Fi networks, then reconnect the network.

## Common Problems

Q: Why my device stays "Offline"?

A: The newly added device needs 1 – 2mins to connect Wi-Fi and network. If it stays offline for a long time, please judge these problems by the blue Wi-Fi indicator status:

1. The blue Wi-Fi indicator quickly flashes once per second, which means that the switch failed to connect your Wi-Fi:
  - ① Maybe you have entered a wrong Wi-Fi password.
  - ② Maybe there's too much distance between the switch your router or the environment causes interference, consider getting close to the router. If failed, please add it again.
  - ③ The 5G Wi-Fi network is not supported and only supports the 2.4GHz wireless network.
  - ④ Maybe the MAC address filtering is open. Please turn it off.

**If none of the above methods solved the problem, you can open the mobile datanetwork on your phone to create a Wi-Fi hotspot, then add the device again.**

2. Blue indicator quickly flashes twice per second, which means your device has connected to Wi-Fi but failed to connect to the server.  
Ensure steady enough network. If double flash occurs frequently, which means you access an unsteady network, not a product problem. If thenetwork is normal, try to turn off the power to restart the switch.

| Scatola   | Scatola | Manuale | Borsa    |
|---|---------|---------|----------|
| PAP 20  | PAP 21  | PAP 22  | LDPE 4   |
| Carta   | Carta   | Carta   | Plastica |
| RACCOLTA DIFFERENZIATA  |         |         |          |
| Verifica le disposizioni del tuo Comune.<br>Separa le componenti e conferiscile in modo corretto. |         |         |          |

## SAR Warning

Under normal use of condition, this equipment should be kept a separation distance of at least 20 cm between the antenna and the body of the user.

Dans des conditions normales d'utilisation, cet équipement doit être maintenu à une distance d'au moins 20 cm entre l'antenne et le corps de l'utilisateur.

## EU Declaration of Conformity

Hereby, Shenzhen Sonoff Technologies Co., Ltd. declares that the radio equipment type T0EU1C, T0EU2C, T0EU3C, T1EU1C, T1EU2C, T1EU3C, T2EU1C, T2EU2C, T2EU3C, T3EU1C, T3EU2C, T3EU3C is in compliance with Directive 2014/53/EU. The full text of the EU declaration of conformity is available at the following internet address:

<https://sonoff.tech/compliance/>

## WEEE Disposal and Recycling Information



All products bearing this symbol are waste electrical and electronic equipment (WEEE as in directive 2012/19/EU) which should not be mixed with unsorted household waste. Instead, you should protect human health and the environment by handing over your waste equipment to a designated collection point for the recycling of waste electrical and electronic equipment, appointed by the government or local authorities. Correct disposal and recycling will help prevent potential negative consequences to the environment and human health. Please contact the installer or local authorities for more information about the location as well as terms and conditions of such collection points.

## For CE Frequency

### EU Operating Frequency Range:

Wi-Fi: 802.11 b/g/n20 2412-2472 MHz

SRD: 433.92MHz (Receive Only for T1EU1C/T1EU2C/T1EU3C/T2EU1C/T2EU2C/T2EU3C/T3EU1C/T3EU2C/T3EU3C)

### EU Output Power:

Wi-Fi 2.4G≤20dBm



**Shenzhen Sonoff Technologies Co., Ltd.**

1001, BLDG8, Lianhua Industrial Park, shenzhen, GD, China  
ZIP code: 518000 Website: [sonoff.tech](http://sonoff.tech)

MADE IN CHINA

